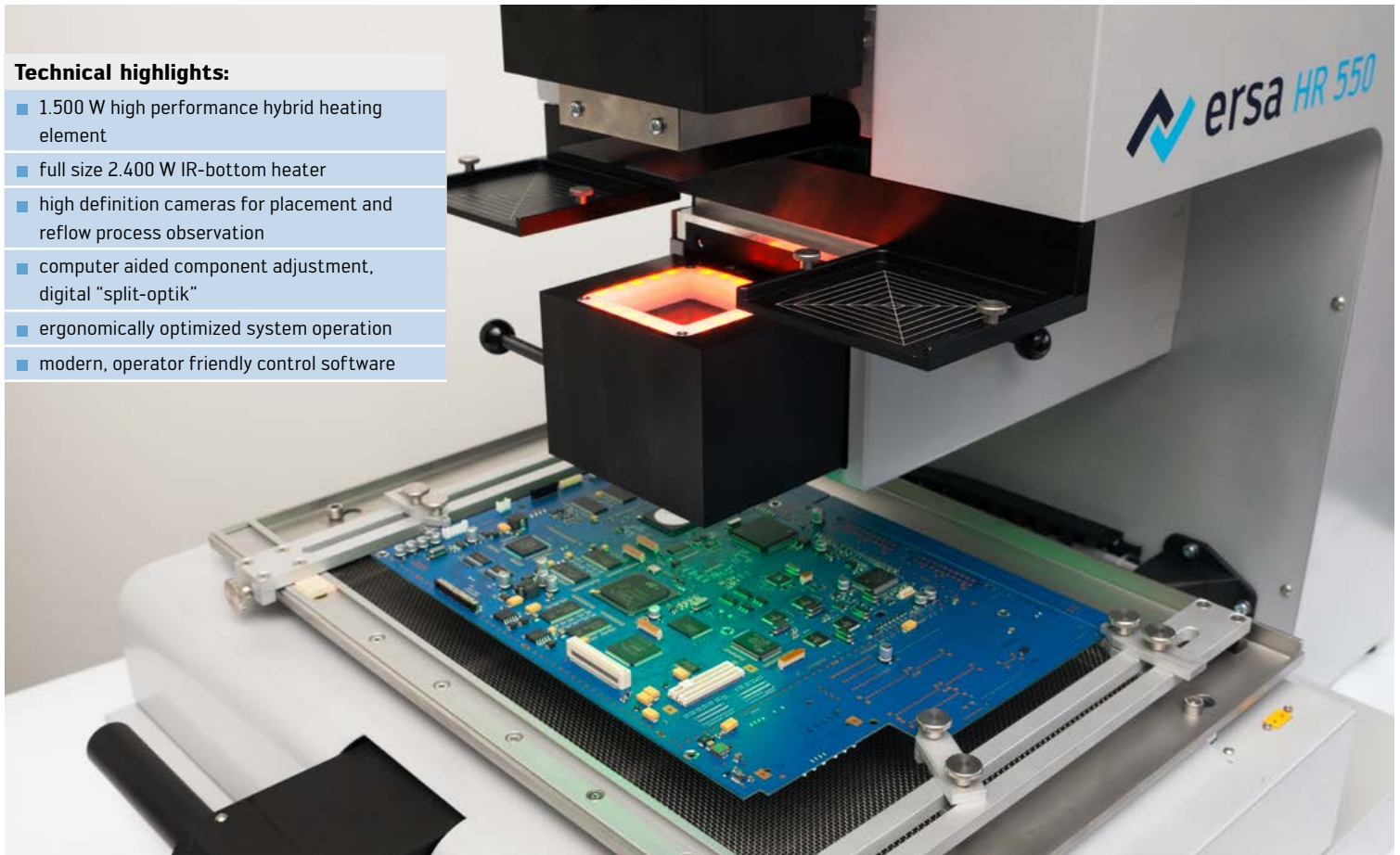


High performance Rework!

Technical highlights:

- 1.500 W high performance hybrid heating element
- full size 2.400 W IR-bottom heater
- high definition cameras for placement and reflow process observation
- computer aided component adjustment, digital "split-optik"
- ergonomically optimized system operation
- modern, operator friendly control software



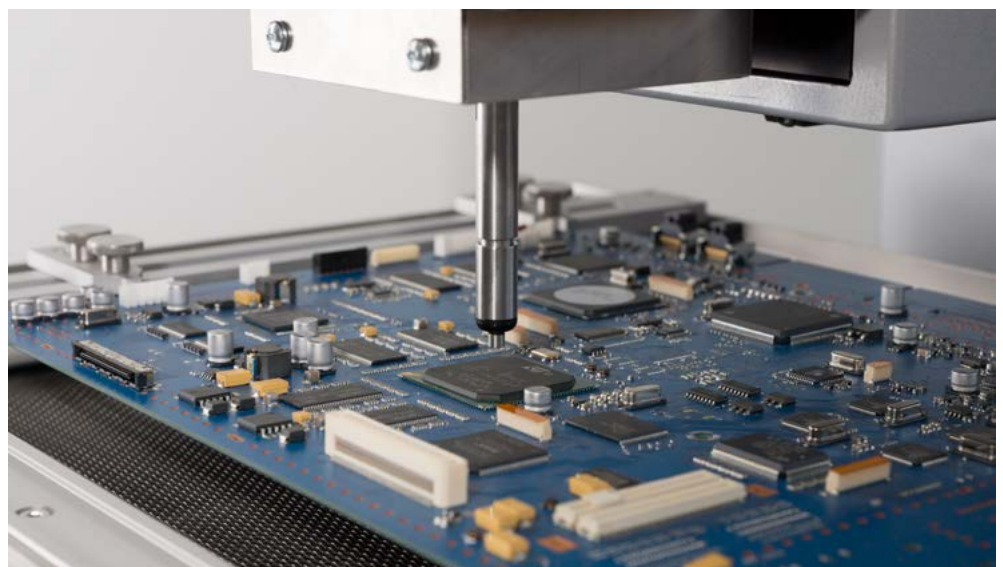
Ersa Hybrid Rework System HR 550 – high performance rework for professionals!

The Ersa hybrid rework system HR 550 addresses all users with highest requirements in terms of precision and process safety in electronic assembly rework applications.

The HR 550 provides a 1.500 W high performance hybrid heating element to desolder and solder SMT components up to dimensions of 70 x 70 mm! A 2.400 W infrared bottom heater in three heating zones guarantees homogeneous bottom side preheating of the complete assembly. Non-contact and contacting temperature sensing directly at the component as well as an optimized process control effect in ideal removal and installation processes of various component types. A high precision vacuum device, integrated into the units heating head, operates component removal and placement. Stepper motors for the exchangeable hybrid heating head and the vacuum pipette supply exact movement during component desoldering and installation. An integrated force sensor recognizes when component and printed circuit board are contacted.

Operators of this unit will be pleased to use this practical rework unit with ergonomically control elements and the completely new computer aided component adjustment by means of brilliant high definition camera images.

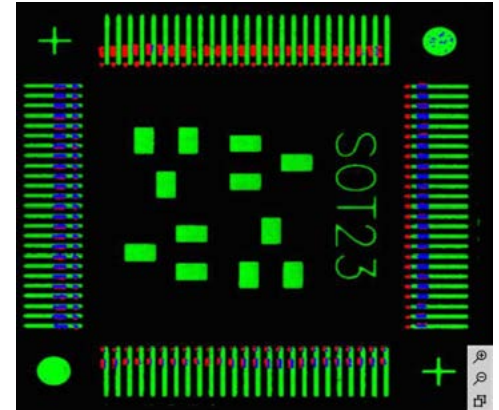
The HR 550 is prepared for operation with the Ersa Dip&Print station. The rework system is operated via a newly developed software and ergonomically arranged operating elements on the station.



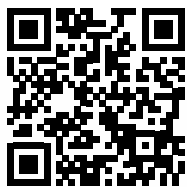
Order information:

Technical data:	
Dimensions (W x D x H)	573 x 765 x 545/747 mm (heating head up/down)
Weight	55 kg
Supply voltage	220- 240 V AC, 50-60 Hz, 16 A
Top heater data	70 x 70 mm, 900 W convection + 600 W infrared
Top heater technology	Hybrid heating element with medium wave IR radiators and additional hot air heating
Bottom heater data (W x D)	390 x 270 mm, 2.400 W in three zones
Bottom heater technology	Medium wave infrared radiator with mesh grid cover
PCB dimensions (W x D)	382 mm x 300 (+x) mm
Working depth	349 mm
Working distance (typ.)	30 - 60 mm to top heater, 35 mm to bottom heater
Component dimensions	0.5 x 0.5 to 70 x 70 mm
Positioning laser	Class II
Field of view placement camera	70 x 70 mm (wide angle) 25 x 33 mm (tele)
Operating software	HRSOft – suitable for Windows 8

Order No.	Description
OHR550	Ersa HR 550 Hybrid Rework System



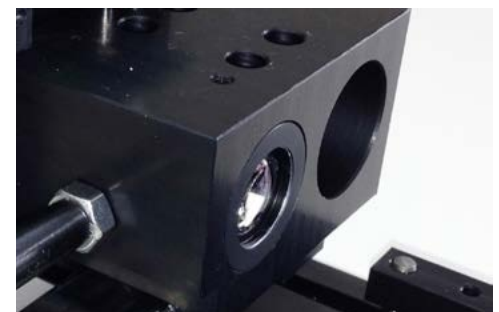
Computer aided adjustment of a QFP
green: pads, red: component pins, blue: overlay "best match"



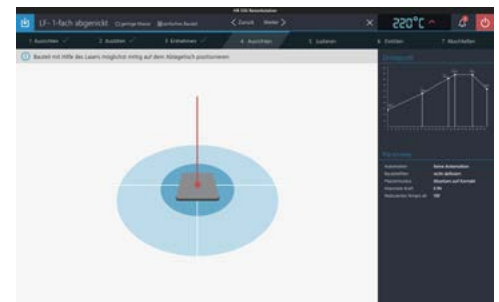
further information on our website



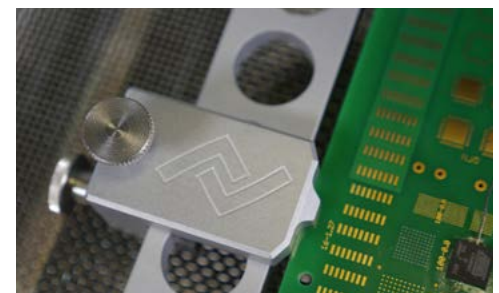
Ersa HR 550 Hybrid Rework System – Rework at the highest level



Switchable lenses for variable magnification



HRSOft with new, intuitive operation surface



Flexible PCB holder